

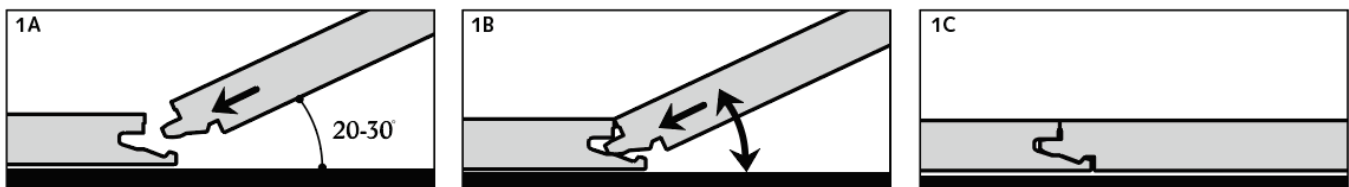
General

Uniclic is a revolutionary system for installing floors without using glue. The panels can be clicked together simply thanks to the ingenious shape of the tongue and groove. Uniclic is unique because you can install the planks in two different ways:



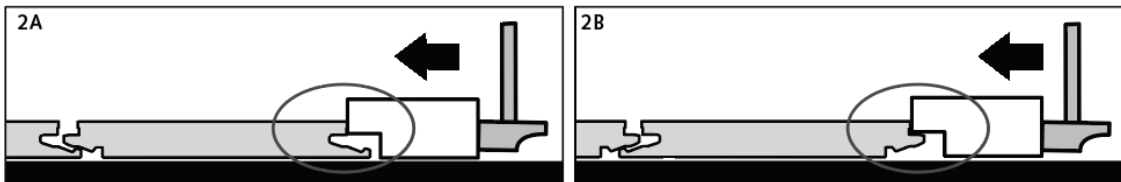
Method A:

Position the panel to be installed at an angle of 20 to 30° to the panel already installed. Move the panel gently up and down and at the same time exert forward pressure. The panels will automatically click into place. You can either insert the tongue into the groove, or the groove on to the tongue. The tongue in groove method is the most common and easiest way. See diagram 1A - 1B - 1C.



Method B:

With Uniclic you can also tap the panels into each other without lifting. For this method you must use the special Uniclic tapping block. The planks should not be joined with a single tap. To avoid damaging the panels you must tap them together gradually. See diagram 2A - 2B.



Tools for installing the floor

For the best result, it is essential that you follow the installation instructions exactly. Besides the regular tools for installing floors (i.e. hammer, saw, pencil, measure) you will also need the following accessories: - installation kit (crowbar, spacers (1-8 mm / 0,039"-0,315") and Uniclic-adapted tapping block)

- underlayment system
- maintenance products

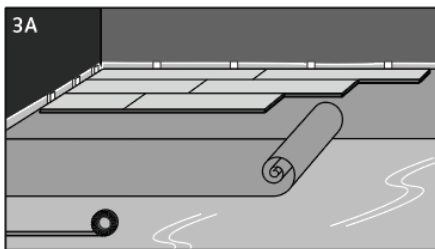
Of course we also need to saw the panels. To obtain a clean cut, the pattern side should face down when you use a jigsaw, sabre saw or circular handsaw and up when you use a handsaw or a crosscut saw.

9 Focus points

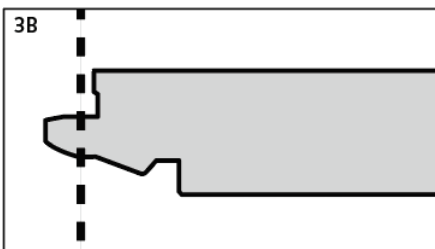
1. Thanks to the Uniclic-system, the floor floats and is installed without glue. You can walk on the floor during and immediately after installation.
2. With Uniclic panels you can choose where you want to begin. Think about what will be the easiest way to install the floor. We will demonstrate the installation for right-handed people, from left to right. You can work in the other direction if you want.
3. Make sure the panels are mixed sufficiently when you install them, so that you do not end up with too many identical, light or dark panels next to each other.

4. Check all panels in daylight before and during installation. Defective panels must never be used.
5. The floor should preferably be installed parallel to how the light enters the room. The ideal conditions are 14-20°C (59-68°F) at a relative humidity of 50-60%.
6. Let the planks acclimatize for 48 hours in the unopened packaging at the normal room temperature, in the middle of the room where the floor is to be installed.
7. Room humidity can vary according to the season, so it is vital that the floor is able to expand and contract. For this reason, make sure you leave an expansion joint of minimum 8 to 10 mm (5/16" to 3/8") on all sides of the floor, around pipes, thresholds and under doors.
8. Large rooms must have expansion joints every 13 m (40 feet) width-wise to the panels and every 13 m (40 feet) length-wise. It is recommended to provide an expansion joint between different rooms (e.g. under the door). Expansion joints can be finished by means of a molding that is attached to the subfloor.
9. Ensure that the end joints of the panels in two successive rows are never in line. Always ensure that the joints are staggered by at least 15 cm / 6 inches.

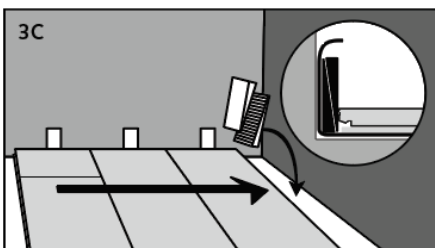
Installing the floor



First install the underlayment, per width and gradually as you progress. If the underlayment is pre-mounted on the panels, then you can skip this step. **See diagram 3A.**

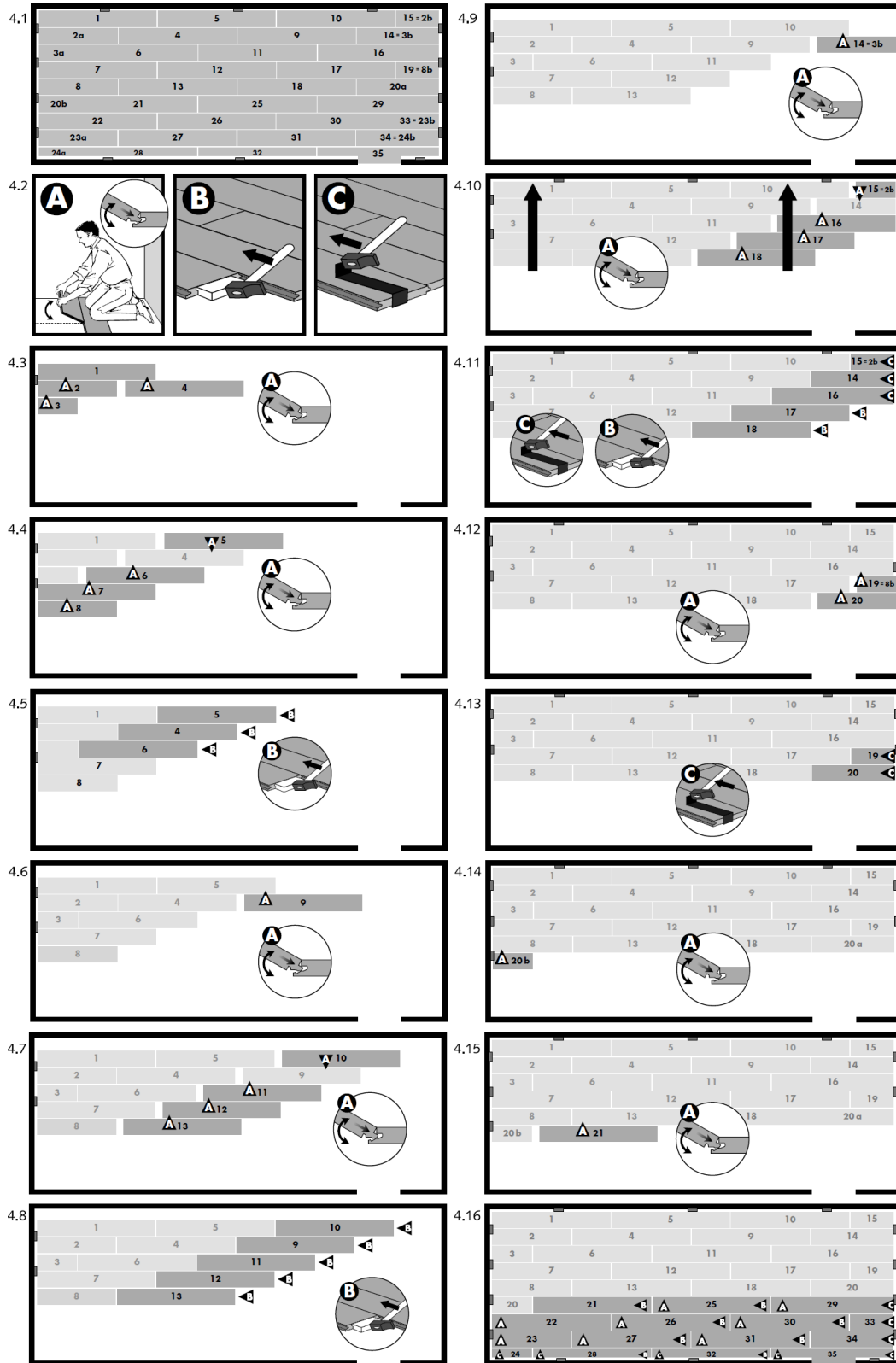


Begin the first row with a whole plank. First saw off the tongue on both the long and the short sides. **See diagram 3B.**

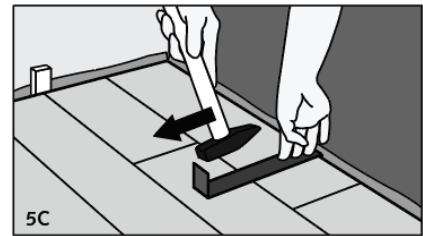
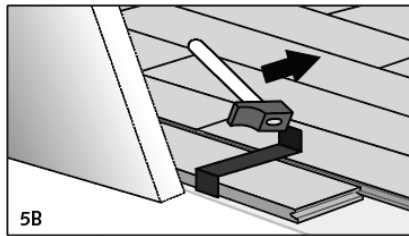
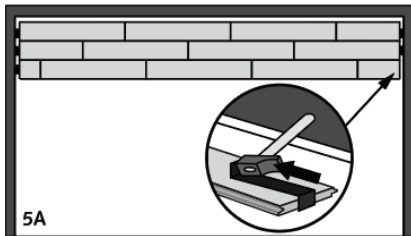


- Put the plank with sawn off sides against the walls. Put the spacers from the installation kit between the planks and the wall. This will ensure that your expansion joint is wide enough: 8 to 10 mm (5/16" to 3/8"). **See diagram 3B.**

The diagrams indicate where the Uniclic panels are clicked together by angling up and down or where they are tapped together flat. Follow the diagrams precisely. **See diagrams 4.1 > 4.16**



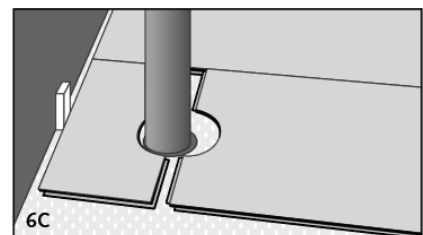
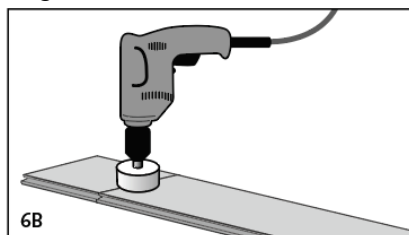
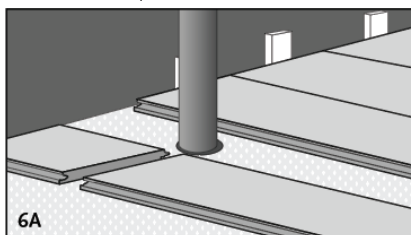
In places where it is too difficult to install the Uniclic planks with the tapping block (e.g. against the wall), you can tap them together using the crowbar and a hammer. **See diagrams 5A - 5B - 5C.**



- There must also be an 8 to 10 mm (5/16" to 3/8") expansion joint between the last row and the wall. Keep this in mind when sawing the last row of panels.

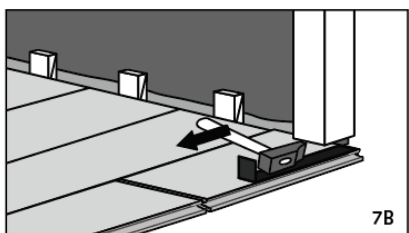
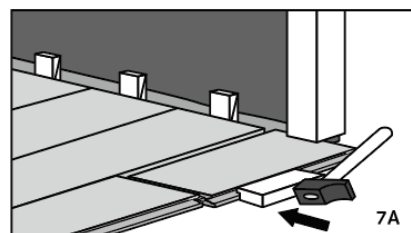
Pipes

In rows where there is a pipe, make sure the pipe falls exactly in line with the short side of two panels. Take a drill bit with the same diameter as the pipe plus 20 mm (3/4") for the expansion. Click the panels together on the short side and drill a hole centered on the joint between the two panels. Now you can install the panels in the floor. **See diagrams 6A - 6B - 6C.**



Under doorframes

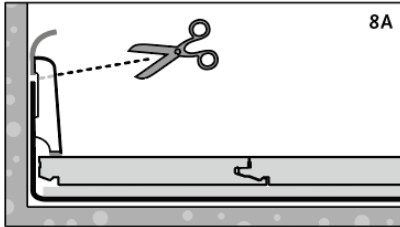
When sawing the panels ensure that the expansion joint under the door is at least 10 mm (3/8"). If you cannot lift the panel, use an adapted tapping block or crowbar and hammer to tap the panels together with the planks that are flat on the floor. **See diagrams 7A - 7B.**



Finishing

- Remove all spacers.
- Install the molding on the plastic membrane that runs up the wall from under the floor. Never attach the molding to the floor. This method allows the floor to expand and contract under the molding.
- For a perfect finish around pipes, use rosettes or caulking.
- In places where profiles or skirting cannot be placed, fill the expansion gaps with caulking.

See diagram 8A.



Enjoy your floor!